

metecnoinspire®

Contents

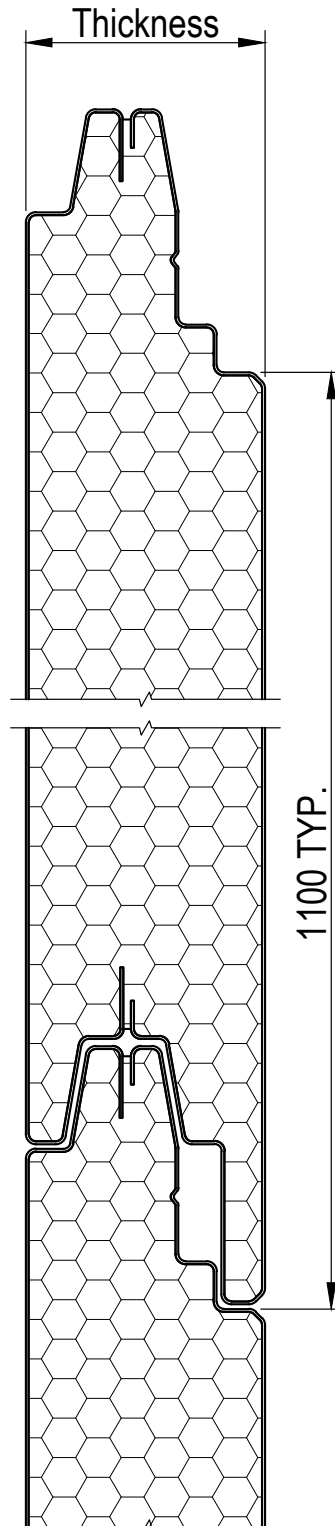
Panel Details - PIR01-PD01-2	3
Horizontal Panel Slip Joint Detail - PIR01-OW01-1	4
Vertical Joint Detail Type C - PIR01-OW05-1	5
Vertical Joint Detail Type D - PIR01-OW06-1	6
External Base Wall Detail - PIR01-OW08-1	7
Parapet Detail A - PIR01-OW09-1	8
Parapet Detail B - PIR01-OW10-1	9
Corner Detail - PIR01-OW11-1	10

Note:

- We recommend that you should engage your local Metecno PIR® architectural specialist at design stage to ensure the panel system is designed to suit specific project requirements.
- All exposed core material is to be encapsulated with a non-combustible covering in order to achieve a BAL-40 or less.
- Panel by Metecno PIR®, screw may be by Metecno PIR®, all other items by others.
- Additional construction details are available through the Metecno PIR Website Client Portal or by contacting a local Metecno PIR® representative. www.metecnopir.com.au
- This drawing is copyright and the property of Metecno Pty Limited trading as Metecno PIR®. It is subject to their legal recall and may not be reproduced or it's contents divulged without written authority.

Panel Details - PIR01-PD01-2

External Cladding

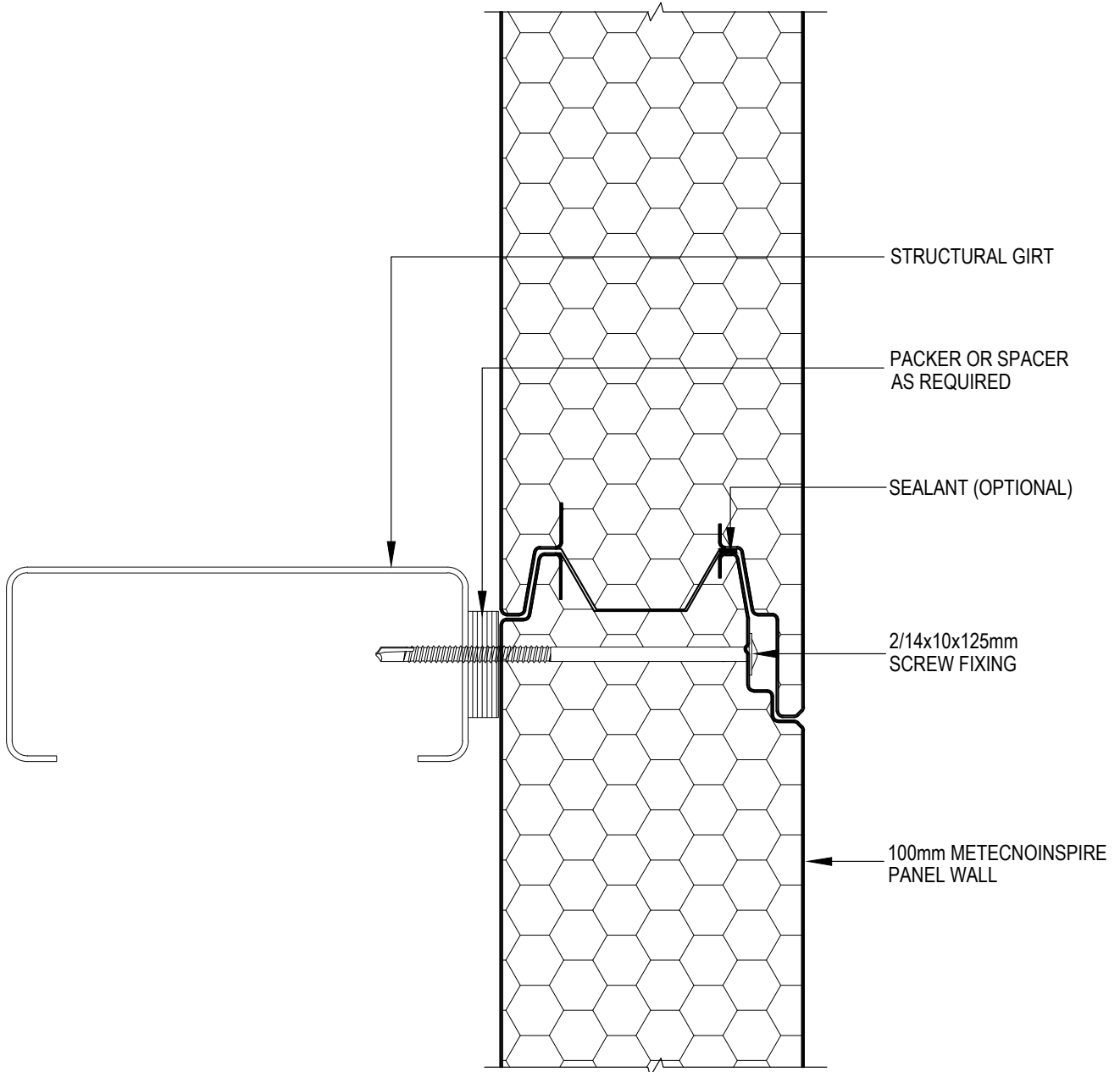


Note:

- We recommend that you should engage your local Metecno PIR® architectural specialist at design stage to ensure the panel system is designed to suit specific project requirements.
- All exposed core material is to be encapsulated with a non-combustible covering in order to achieve a BAL-40 or less.
- Panel by Metecno PIR®, screw may be by Metecno PIR®, all other items by others.
- Additional construction details are available through the Metecno PIR Website Client Portal or by contacting a local Metecno PIR® representative. www.metecnopir.com.au
- This drawing is copyright and the property of Metecno Pty Limited trading as Metecno PIR®. It is subject to their legal recall and may not be reproduced or its contents divulged without written authority.

Horizontal Panel Slip Joint Detail - PIR01-OW01-1

Horizontal Cladding

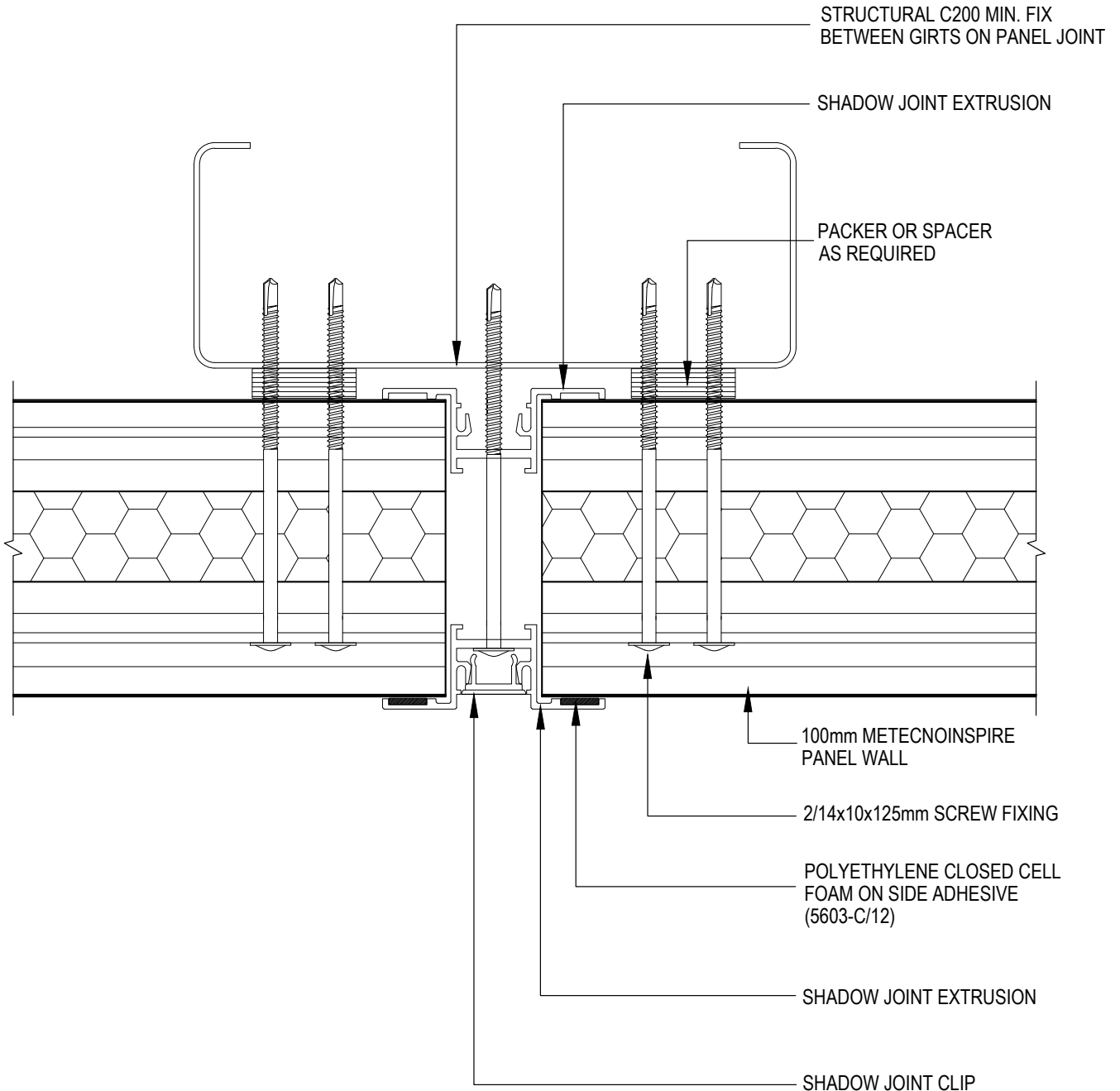


Note:

- We recommend that you should engage your local Metecno PIR® architectural specialist at design stage to ensure the panel system is designed to suit specific project requirements.
- All exposed core material is to be encapsulated with a non-combustible covering in order to achieve a BAL-40 or less.
- Panel by Metecno PIR®, screw may be by Metecno PIR®, all other items by others.
- Additional construction details are available through the Metecno PIR Website Client Portal or by contacting a local Metecno PIR® representative. www.metecnoipir.com.au
- This drawing is copyright and the property of Metecno Pty Limited trading as Metecno PIR®. It is subject to their legal recall and may not be reproduced or its contents divulged without written authority.

Vertical Joint Detail Type C - PIR01-OW05-1

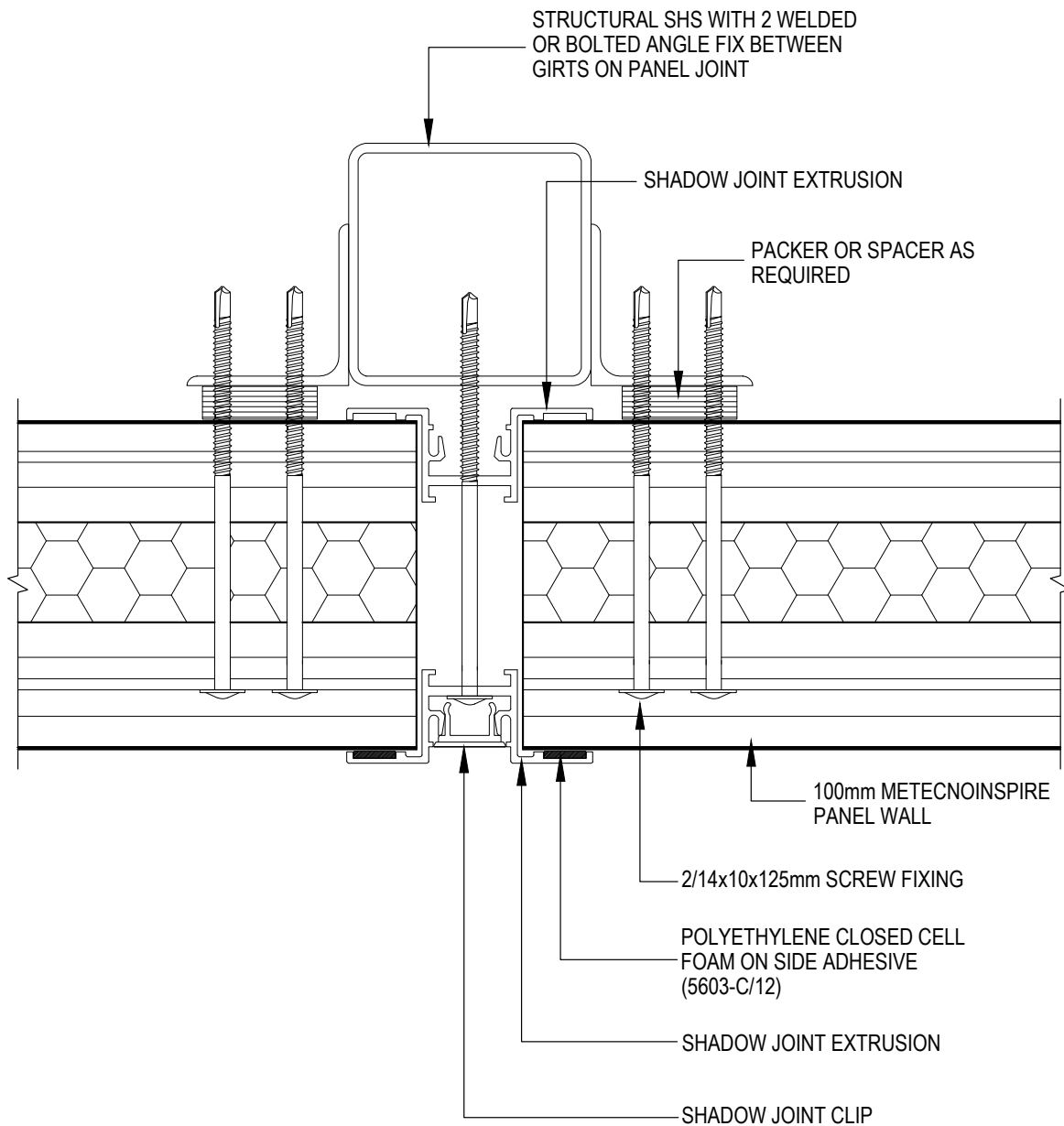
Horizontal Cladding



- Note:
- We recommend that you should engage your local Metecno PIR® architectural specialist at design stage to ensure the panel system is designed to suit specific project requirements.
 - All exposed core material is to be encapsulated with a non-combustible covering in order to achieve a BAL-40 or less.
 - Panel by Metecno PIR®, screw may be by Metecno PIR®, all other items by others.
 - Additional construction details are available through the Metecno PIR Website Client Portal or by contacting a local Metecno PIR® representative. www.metecnoinspire.com.au
 - This drawing is copyright and the property of Metecno Pty Limited trading as Metecno PIR®. It is subject to their legal recall and may not be reproduced or its contents divulged without written authority.

Vertical Joint Detail Type D - PIR01-OW06-1

Horizontal Cladding

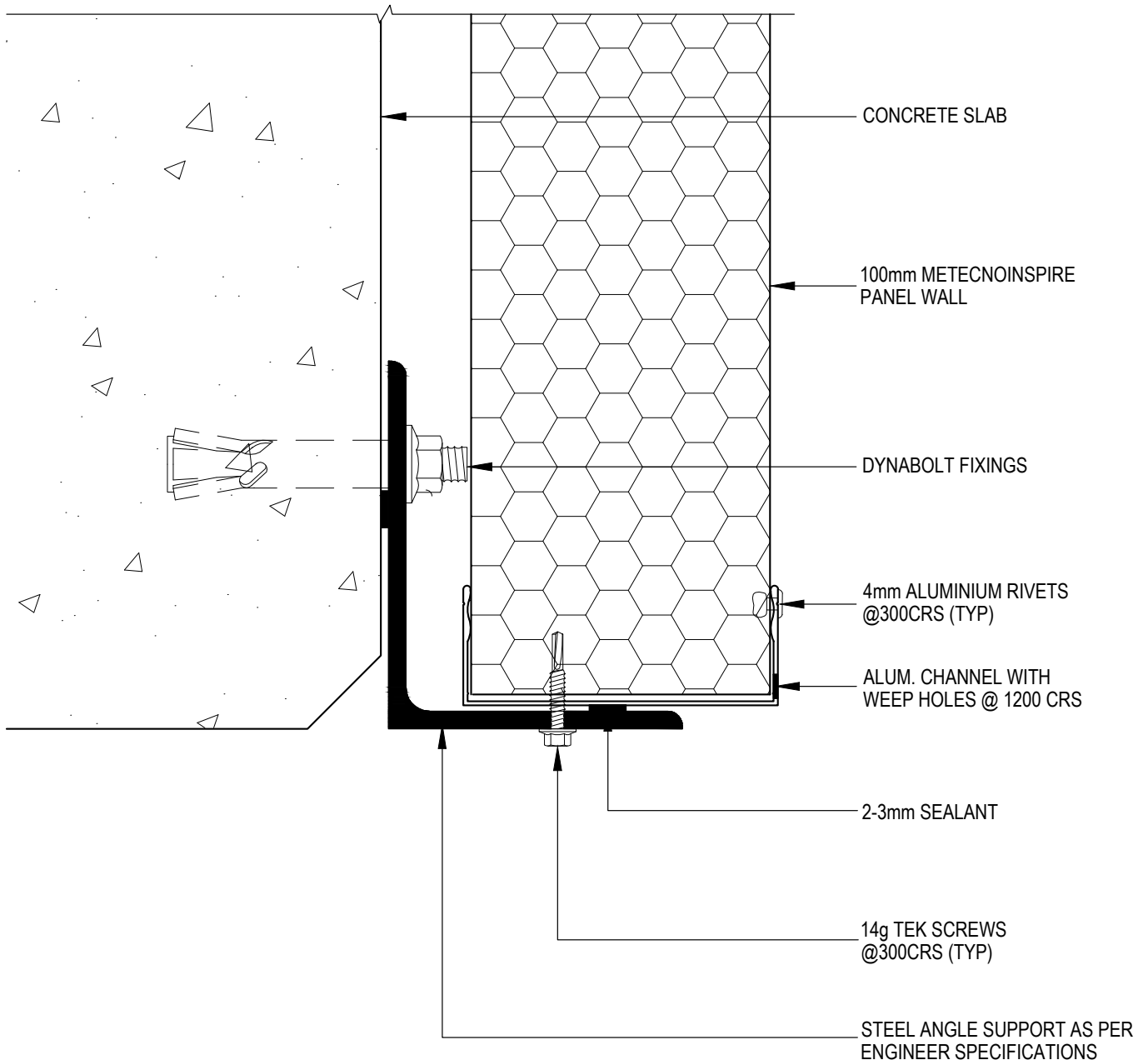


Note:

- We recommend that you should engage your local Metecno PIR® architectural specialist at design stage to ensure the panel system is designed to suit specific project requirements.
- All exposed core material is to be encapsulated with a non-combustible covering in order to achieve a BAL-40 or less.
- Panel by Metecno PIR®, screw may be by Metecno PIR®, all other items by others.
- Additional construction details are available through the Metecno PIR Website Client Portal or by contacting a local Metecno PIR® representative. www.metecnoinspire.com.au
- This drawing is copyright and the property of Metecno Pty Limited trading as Metecno PIR®. It is subject to their legal recall and may not be reproduced or its contents divulged without written authority.

External Base Wall Detail - PIR01-OW08-1

Horizontal Cladding

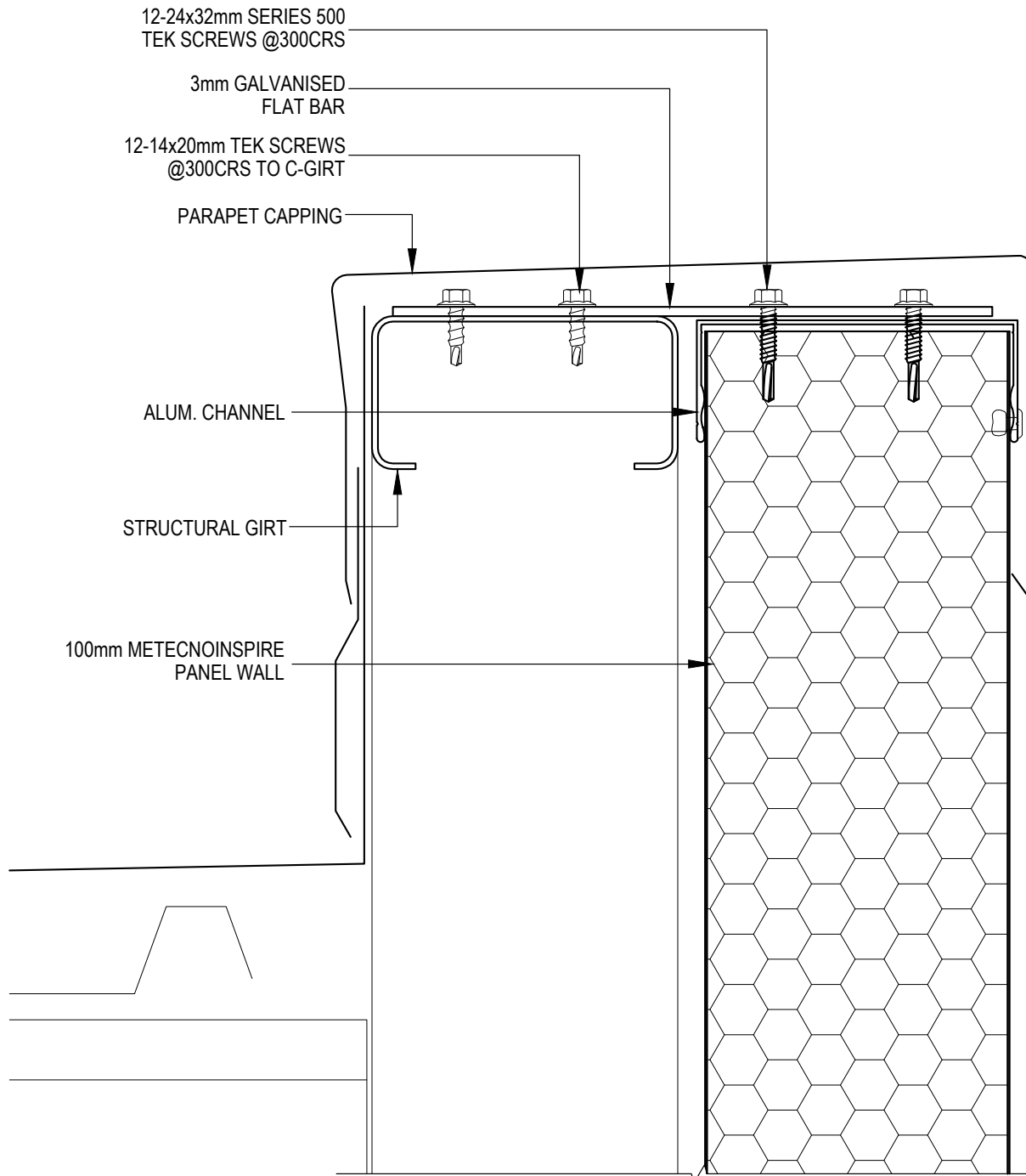


Note:

- We recommend that you should engage your local Metecno PIR® architectural specialist at design stage to ensure the panel system is designed to suit specific project requirements.
- All exposed core material is to be encapsulated with a non-combustible covering in order to achieve a BAL-40 or less.
- Panel by Metecno PIR®, screw may be by Metecno PIR®, all other items by others.
- Additional construction details are available through the Metecno PIR Website Client Portal or by contacting a local Metecno PIR® representative. www.metecnoinspire.com.au
- This drawing is copyright and the property of Metecno Pty Limited trading as Metecno PIR®. It is subject to their legal recall and may not be reproduced or its contents divulged without written authority.

Parapet Detail A - PIR01-OW09-1

Horizontal Cladding

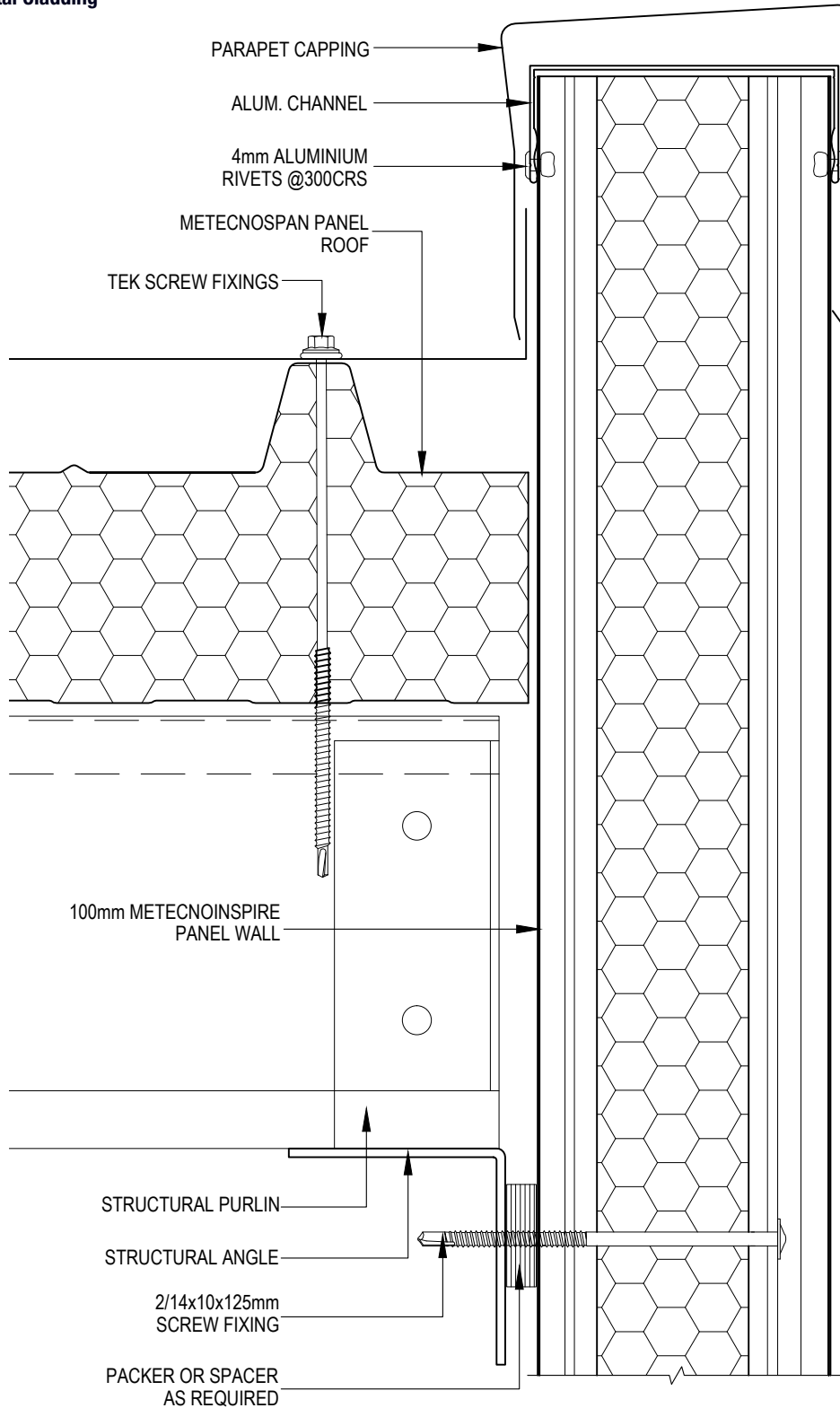


Note:

- We recommend that you should engage your local Metecno PIR® architectural specialist at design stage to ensure the panel system is designed to suit specific project requirements.
- All exposed core material is to be encapsulated with a non-combustible covering in order to achieve a BAL-40 or less.
- Panel by Metecno PIR®, screw may be by Metecno PIR®, all other items by others.
- Additional construction details are available through the Metecno PIR Website Client Portal or by contacting a local Metecno PIR® representative. www.metecnoipir.com.au
- This drawing is copyright and the property of Metecno Pty Limited trading as Metecno PIR®. It is subject to their legal recall and may not be reproduced or its contents divulged without written authority.

Parapet Detail B - PIR01-OW10-1

Horizontal Cladding

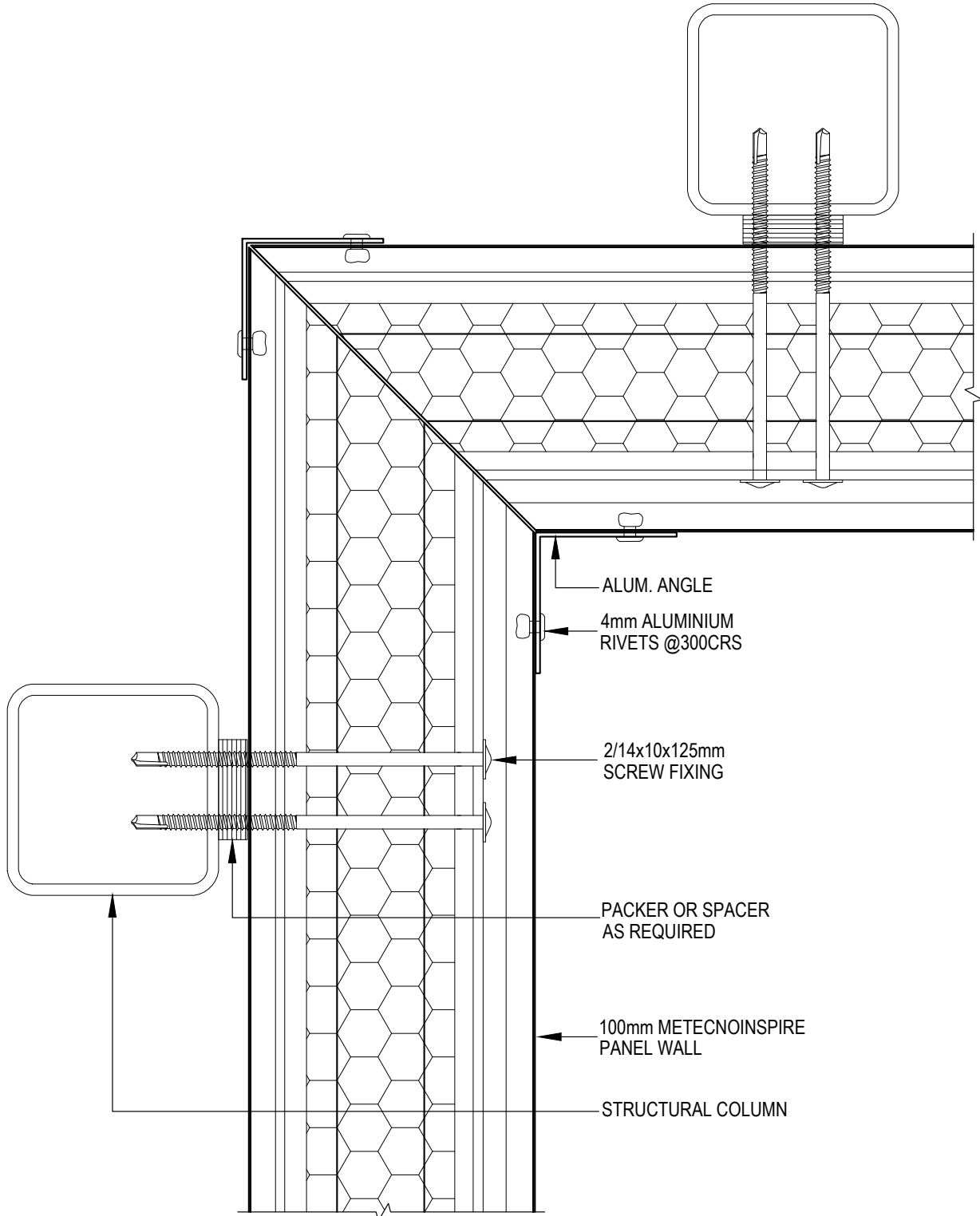


Note:

- We recommend that you should engage your local Metecno PIR® architectural specialist at design stage to ensure the panel system is designed to suit specific project requirements.
- All exposed core material is to be encapsulated with a non-combustible covering in order to achieve a BAL-40 or less.
- Panel by Metecno PIR®, screw may be by Metecno PIR®, all other items by others.
- Additional construction details are available through the Metecno PIR Website Client Portal or by contacting a local Metecno PIR® representative. www.metecno Pir.com.au
- This drawing is copyright and the property of Metecno Pty Limited trading as Metecno PIR®. It is subject to their legal recall and may not be reproduced or it's contents divulged without written authority.

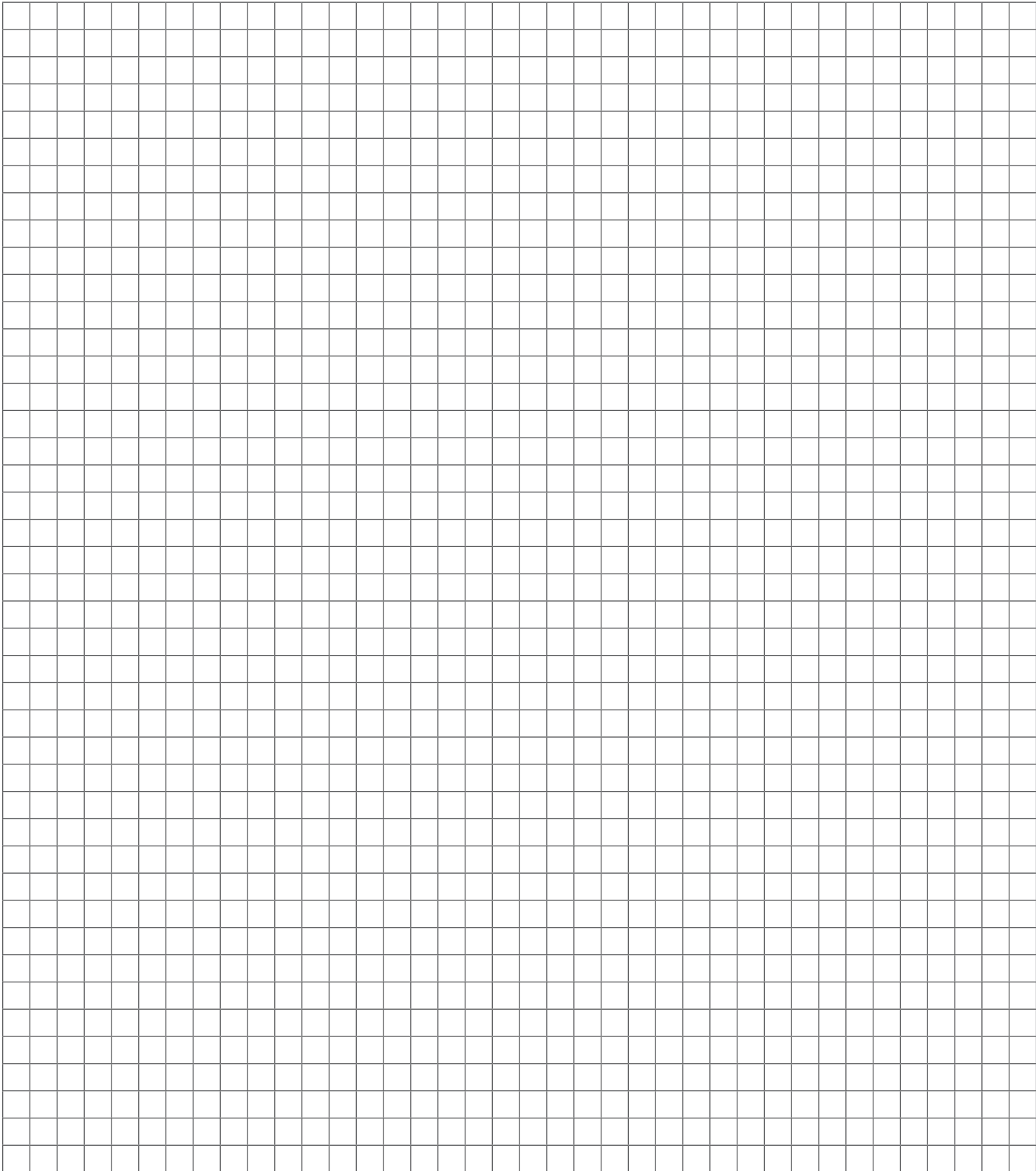
Corner Detail - PIR01-OW11-1

Horizontal Cladding



Note:

- We recommend that you should engage your local Metecno PIR® architectural specialist at design stage to ensure the panel system is designed to suit specific project requirements.
- All exposed core material is to be encapsulated with a non-combustible covering in order to achieve a BAL-40 or less.
- Panel by Metecno PIR®, screw may be by Metecno PIR®, all other items by others.
- Additional construction details are available through the Metecno PIR Website Client Portal or by contacting a local Metecno PIR® representative. www.metecnoinspire.com.au
- This drawing is copyright and the property of Metecno Pty Limited trading as Metecno PIR®. It is subject to their legal recall and may not be reproduced or its contents divulged without written authority.



- Note:
- We recommend that you should engage your local Metecno PIR® architectural specialist at design stage to ensure the panel system is designed to suit specific project requirements.
 - All exposed core material is to be encapsulated with a non-combustible covering in order to achieve a BAL-40 or less.
 - Panel by Metecno PIR®, screw may be by Metecno PIR®, all other items by others.
 - Additional construction details are available through the Metecno PIR Website Client Portal or by contacting a local Metecno PIR® representative. www.metecnopir.com.au
 - This drawing is copyright and the property of Metecno Pty Limited trading as Metecno PIR®. It is subject to their legal recall and may not be reproduced or it's contents divulged without written authority.



www.metecnopir.com.au

Call (07) 3323 9900

Metecno Pty Limited. ABN 44 096 402 934. The manufacturer reserves the right to change the specification without notice. Metecno PIR®, MetecnoInfinite®, MetecnoKasset®, MetecnoPanel®, MetecnoSpan® and EconoClad® are trademarks of Metecno Pty Limited. The colours shown in this publication have been reproduced to represent actual product colours as accurately as possible. However, given printing limitations, we recommend checking your chosen colour against an actual sample before placing orders. Panel profiles shown in this publication are indicative only. Refer to engineering for exact specifications. This advice is of a general nature only. Designers must provide for adequate structural performance and other Building Code requirements. This information is subject to change.

*Warranty subject to exclusions, application and eligibility criteria. For full terms and conditions and to determine the eligibility of your project for the warranty visit bluescopesteel.com.au/warranties or call BlueScope on 1800 022 999. Colorbond®, Permagard® and BlueScope are registered trademarks of BlueScope Steel Limited.

Refer to Metecno PIR® website for latest version. Consult Metecno PIR® for your application.

B0N0535 Drawing Pack - MetecnoInspire v2. 21/02/19